

Industrial Stormwater Enforcement Actions

Guest: US EPA Enforcement



Mapistry Webinar
March 13, 2019



Lawrence Torres

EPA Region 9
Compliance & Enforcement
Officer



Ryan Janoch, PE

Mapistry
Co-founder & COO



The public has
unprecedented
access to the details
of your environmental
program

Violation detection is easier

Recent technology advancements are fueling an increase in citizen-initiated lawsuits

“

There is a growing toolkit of inexpensive monitoring technologies that make it easier for private groups and individuals to detect environmental violations and collect evidence.

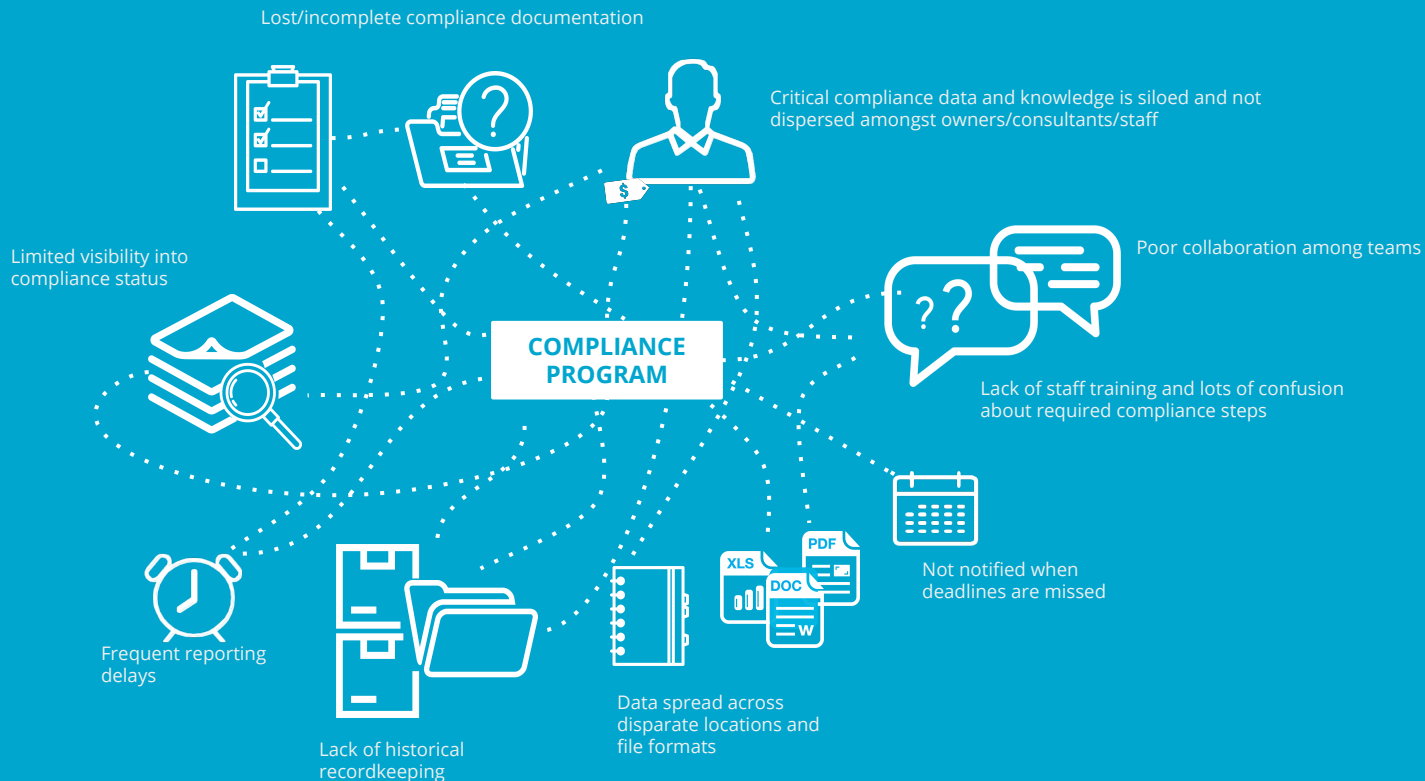
- Crowell Moring LLP

Risk of compliance violations is high

Navigating complex and ever-changing regulations is extremely challenging



Compliance programs are complicated



A large industrial facility, possibly a refinery or chemical plant, with multiple tall distillation columns, complex piping, and structural steel frameworks. The image is overlaid with a semi-transparent blue filter. The text is centered over the middle of the image.

The **best companies excel** across
the board from production to
environmental

Environmental violations are
expensive

In 2017, environmental violations cost
US companies **more than \$22B**¹

\$11.7M settlement for stormwater at
21 facilities across 5 states¹

\$4.5M cost for stormwater violations
at 18 facilities¹

A person wearing a hard hat and safety vest is using a tablet on a grassy field. The image is overlaid with a green tint.

Those who embrace technology,
automation, and real-time analytics
avoid violations.

How do we build a **world-class** environmental program?

Analytics



Automation



Mobile



Training



Subject Experts



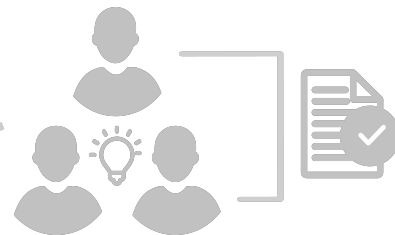
Our Solution



SUBJECT MATTER EXPERTS

Stormwater, SPCC, and Hazardous Materials

Connect with a dedicated team of stormwater, SPCC, and hazardous waste subject matter experts, anytime. Whether it's a simple question or something more detailed like BMP design, risk assessment, completing mandatory permits, plans, inspections, or samples, we're here to help! Unlike consultants, we don't charge hourly, we're to help you succeed today and everyday.



EDUCATION

eLearning & In-Person Training

Access an abundance of learning & education opportunities including live and on-demand training sessions for beginners or advanced learners or get exclusive litigation research as well as critical industry trends and insights to keep your team informed and prepared to run best-in-class compliance programs.



TECHNOLOGY

Environmental Compliance Platform

Centralizing your compliance data, records, and history with Mapistry helps minimize costly risks while ensuring the integrity, effectiveness, and efficiency of your compliance programs. Some of the world's most innovative industrial manufacturers use Mapistry to achieve multi-site compliance.

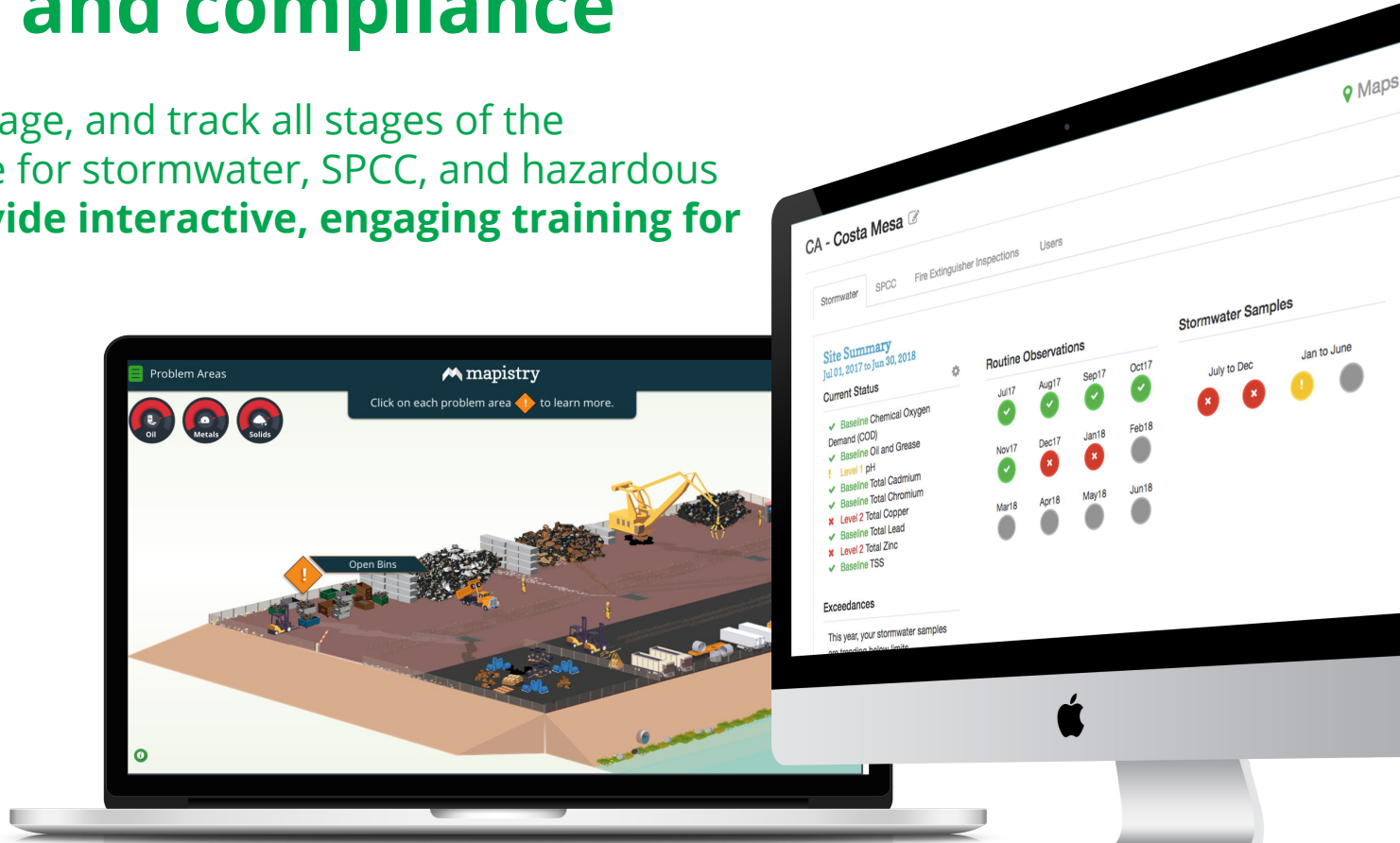
Leading industrial manufacturing companies use Mapistry solutions

Trusted By:



Single platform for continuous risk reduction and compliance

Easily capture, manage, and track all stages of the compliance lifecycle for stormwater, SPCC, and hazardous materials **plus provide interactive, engaging training for your employees!**

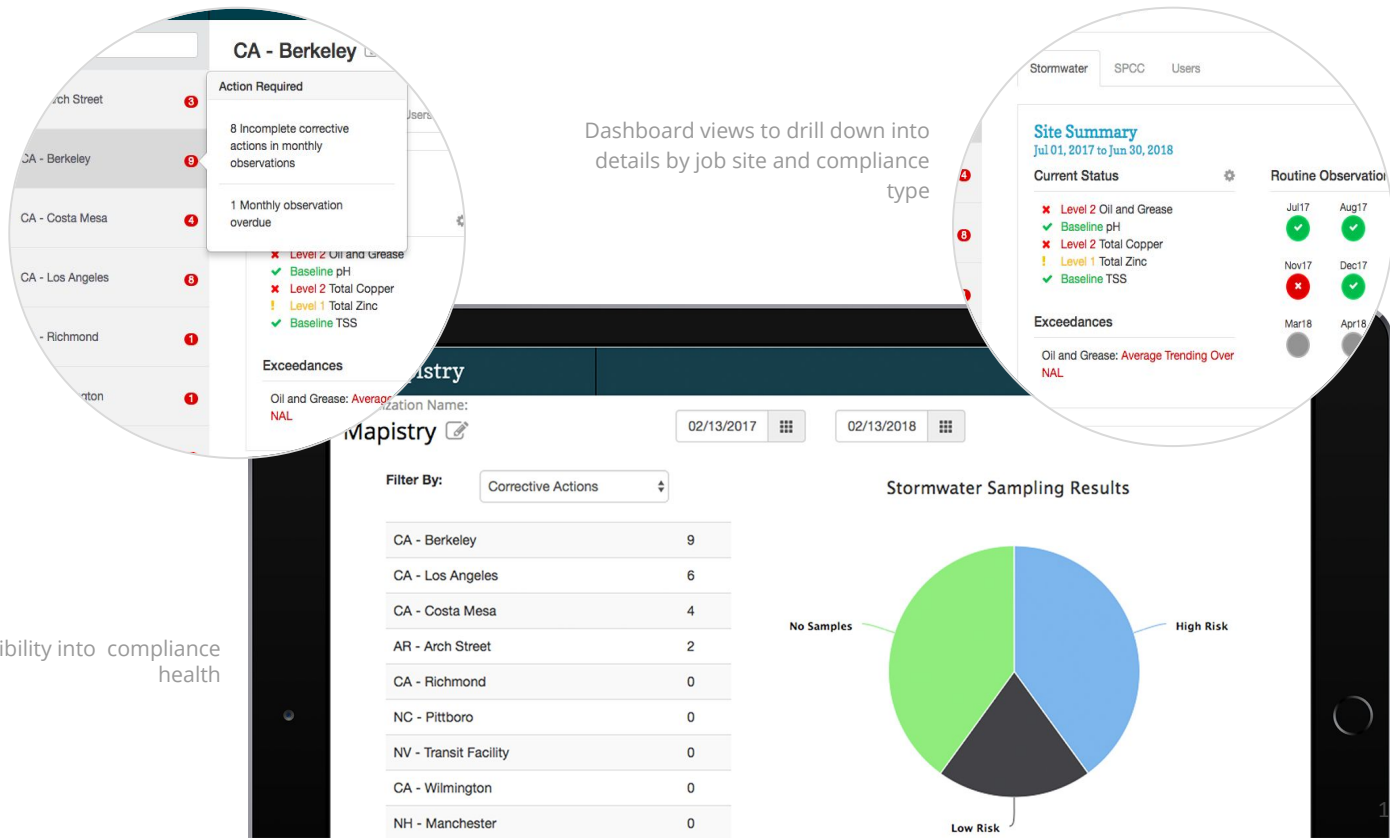


Ensure environmental excellence across all of your facilities

Real-time alerts, performance, and results tracking all in one place

Dashboard views to drill down into details by job site and compliance type

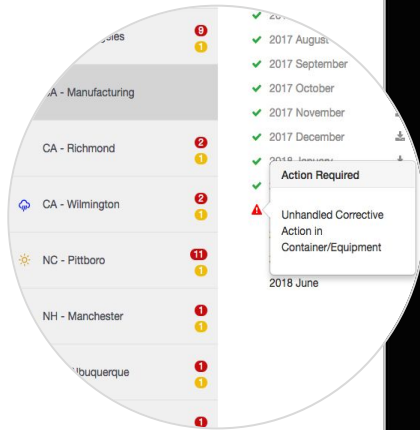
Get continuous visibility into compliance health



Completely painless and intuitive

Easily manage tasks, log inspections, perform swppp updates, more...

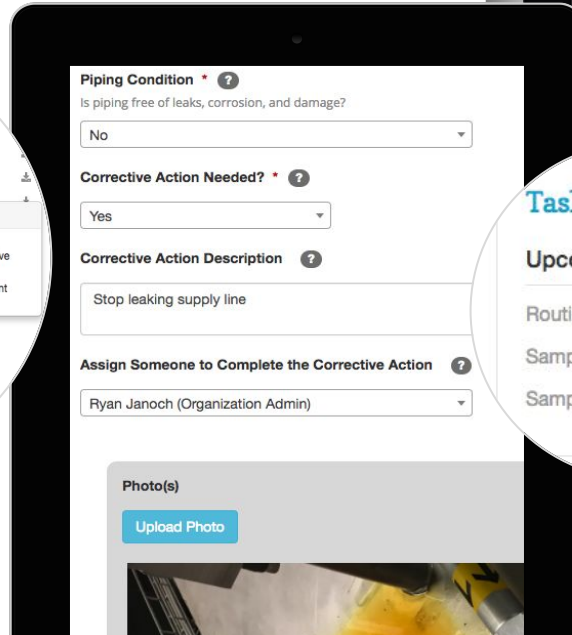
Centrally monitor weather changes, required actions, and compliance status



Easily log issues and corrective actions anytime, anywhere



Instantly prepare and submit properly formatted regulatory reports to state and federal electronic reporting systems

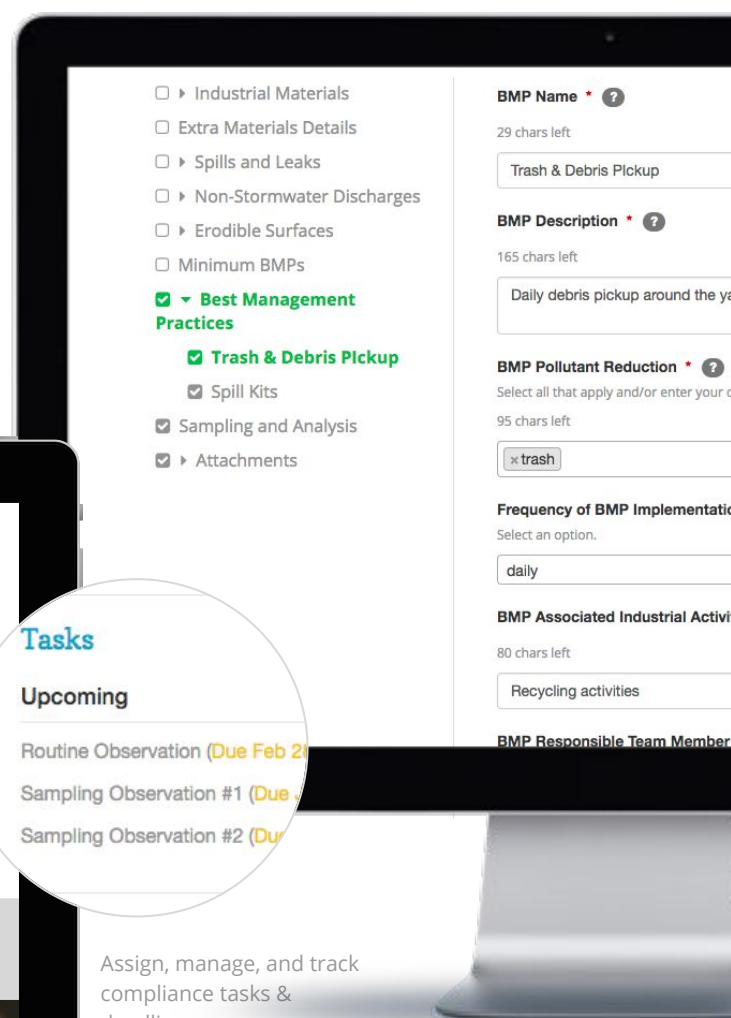


Tasks

Upcoming

- Routine Observation (Due Feb 21)
- Sampling Observation #1 (Due Feb 21)
- Sampling Observation #2 (Due Feb 21)

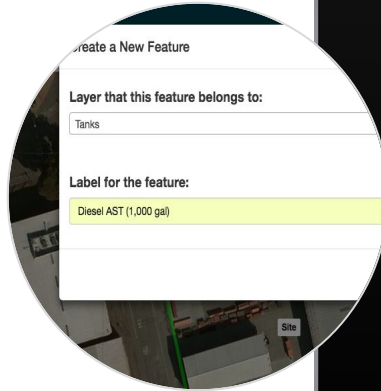
Assign, manage, and track compliance tasks & deadlines



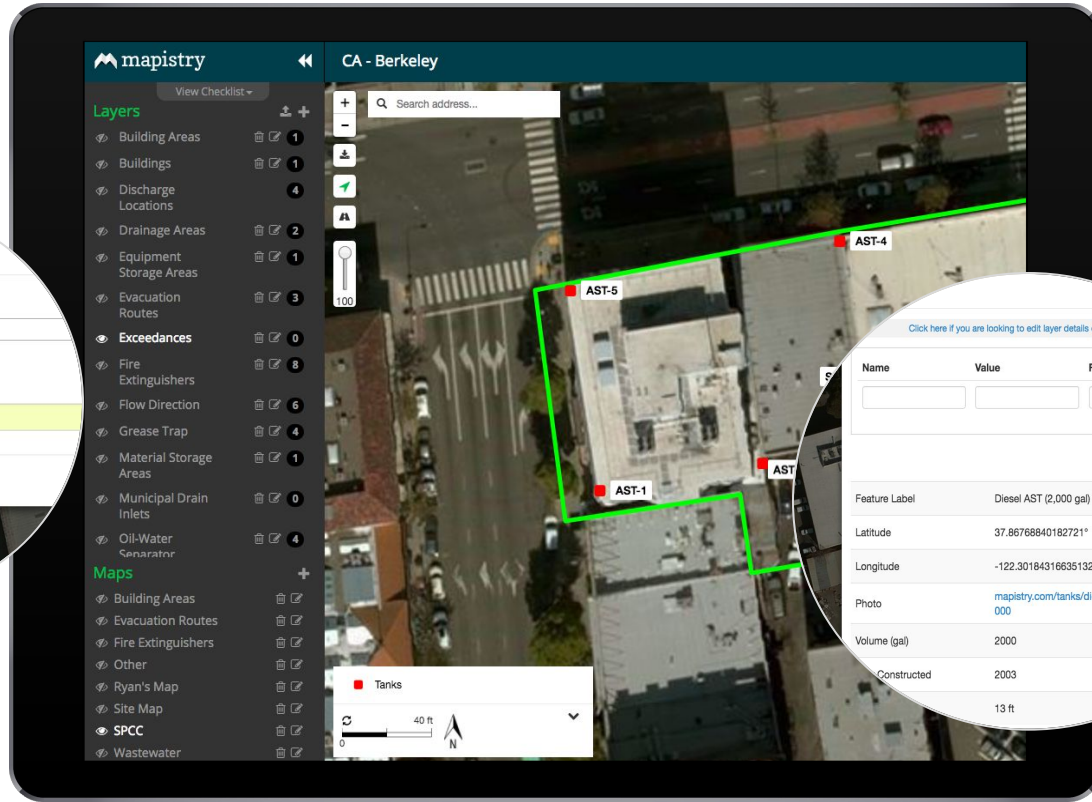
Intelligent site mapping

Move your maps from analog to digital

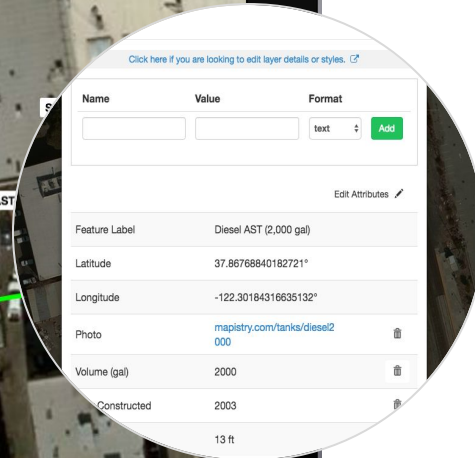
Use layers, custom styles, drag and drop, and other annotation features to easily generate/update facility maps



Mobile and web-based data capture simplifies updates while preserving the historic records



Instantly markup all required data points including storage areas, receiving waters, pollutant sources, tanks, drainage areas, and Best Management Practices (BMPs)



Capture feature details and link elements back to references in your plans and actions

Your Spill Kit

Click on each marker to learn more.



Gloves

Be sure you wear gloves at all times throughout the cleanup and decontamination process.



A person in a suit is holding a document titled "LAWSUIT" over a desk. The desk has a calculator and a notebook. The image is overlaid with a blue tint.

LAWSUIT

National Academy of Sciences Report

Committee Mandate

- Suggest improvement to current MSGP benchmark monitoring
- Evaluate the feasibility of numeric retention standards (e.g. storm size)
- Identify the highest priority industrial facilities for additional monitoring and **develop numeric effluent limitations**

Committee's Overarching Statement

*“As electronic reporting of industrial stormwater monitoring data becomes **fully implemented and integrated for all states**, large amounts of valuable industrial **stormwater data will be available for analysis, evaluation**, and identifying areas for improvement.”*

- National Academy of Sciences Report 2019

EPA National Enforcement Initiatives

Keeping Raw Sewage and Contaminated Stormwater Out of Our Nation's Water

Keeping Industrial Pollutants Out of Our Nation's Water

How do you
take the
national
initiative and
make it local?



Partner agencies

Local priorities

Public input

Industry input

Current Regional EPA Initiative

- Target - **Non-filers**
- Method - Data analysis
- Process?

Why is this a focus for EPA?

Local Site Inspections

Case Studies

On the ground site visits.....
what really happens

What was
going on
here?



The value of a **site visit!**



How can companies avoid
EPA enforcement?

A close-up photograph of a duck's head, showing its large, white, inflated crop. The duck has a yellowish-orange beak and is looking directly at the camera. The background is a body of water with several other ducks swimming in the distance. The entire image has a light blue overlay.

Questions AND answers!

















Upcoming webinars

California TMDL Amendments

State Water Board TMDL Lead Shuka Rastegarpour
Tuesday April 2nd

National Academy of Sciences Report & EPA MSGP Impact

National Academy of Sciences Committee Chairman Dr. Allen Davis
Wednesday April 24th

Thank you!

Questions: ryan@mapistry.com