

# The Three Phases of EHS Inspection Programs: Ensuring Compliance & Accountability



# Ryan Janoch

COO, Co-Founder of Mapistry

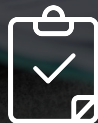
# In the past....

Inspection programs required less resources and less specialized tools to manage effectively



## **Paper Worked**

Information could reside locally in files



## **Simpler Rules**

Regulations were easy to comprehend



## **Minimal Oversight**

Internal and external enforcement was limited

# Today...

The speed, complexity and consequences of compliance inspections is outpacing the bandwidth of compliance staff



## More Connected

There's an unprecedented need to connect to people, data and documents in real-time



## More Complexity

Regulations are evolving quickly and they are drastically expanding in breadth and depth



## Sharper Consequences

Non-compliance has more serious and far-reaching legal and financial consequences





The most resilient companies meet  
rising compliance demands **without  
disruptions to their business**

# Companies **without** robust compliance programs...

Get severely derailed

**\$22 Billion**

In Penalties

**Amount charged in environmental violations** in 2017<sup>1</sup> (Only US EPA enforcement!)

**3504**

Hours spent on litigation

**Average number of corporate hours spent** resolving regulatory issues<sup>3</sup>

**30%**

of the top corporate fines

**Environmental issues accounted for 30%** of the largest corporate penalties in 2018<sup>2</sup>

A person wearing a blue long-sleeved shirt and a high-visibility orange safety vest with reflective silver stripes is standing at a construction site. They are holding a clipboard and a pen, appearing to be taking notes. In the background, there is a yellow excavator and other construction equipment. The scene is dimly lit, suggesting dusk or dawn. A semi-transparent dark overlay covers the right side of the image, featuring a pattern of white dots. The text "Take control of your environmental program..." is written in white, bold, sans-serif font across the center of the image.

**Take control of your  
environmental program...**

# Resilient compliance systems

Build business continuity and reduce risk



## Transparency

Provide real-time, 24/7 visibility and insight into compliance health



## Collaboration

Empower teams with virtual access to essential field data, tasks and documents



## Efficiency

Automate workflows and improve top-down governance of programs

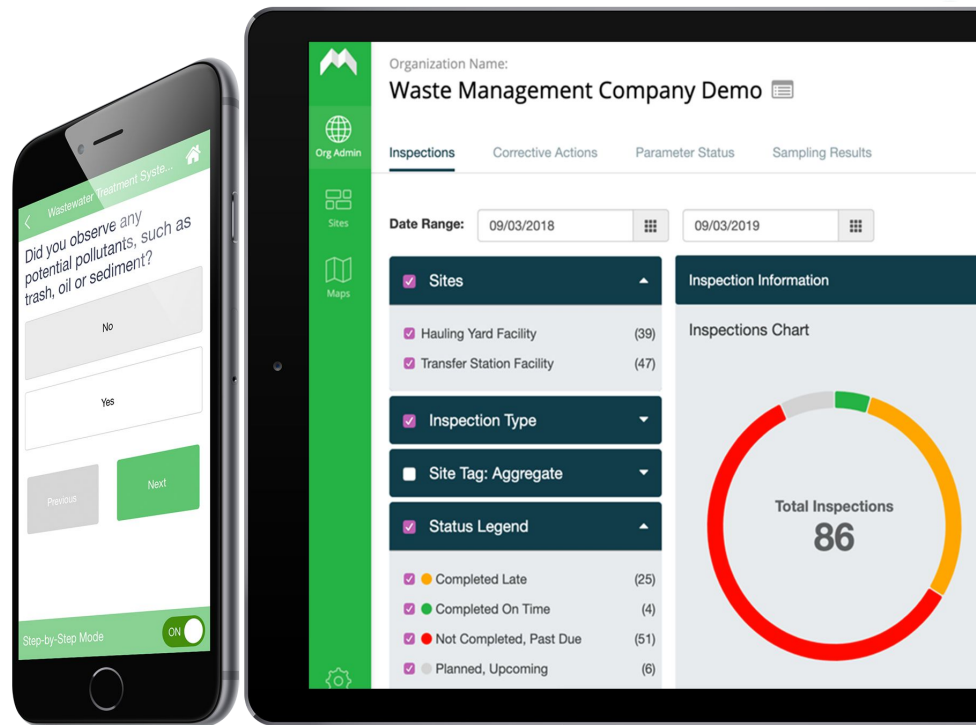


## Accountability

Ensure dispersed teams are staying accountable for compliance obligations

## Capture

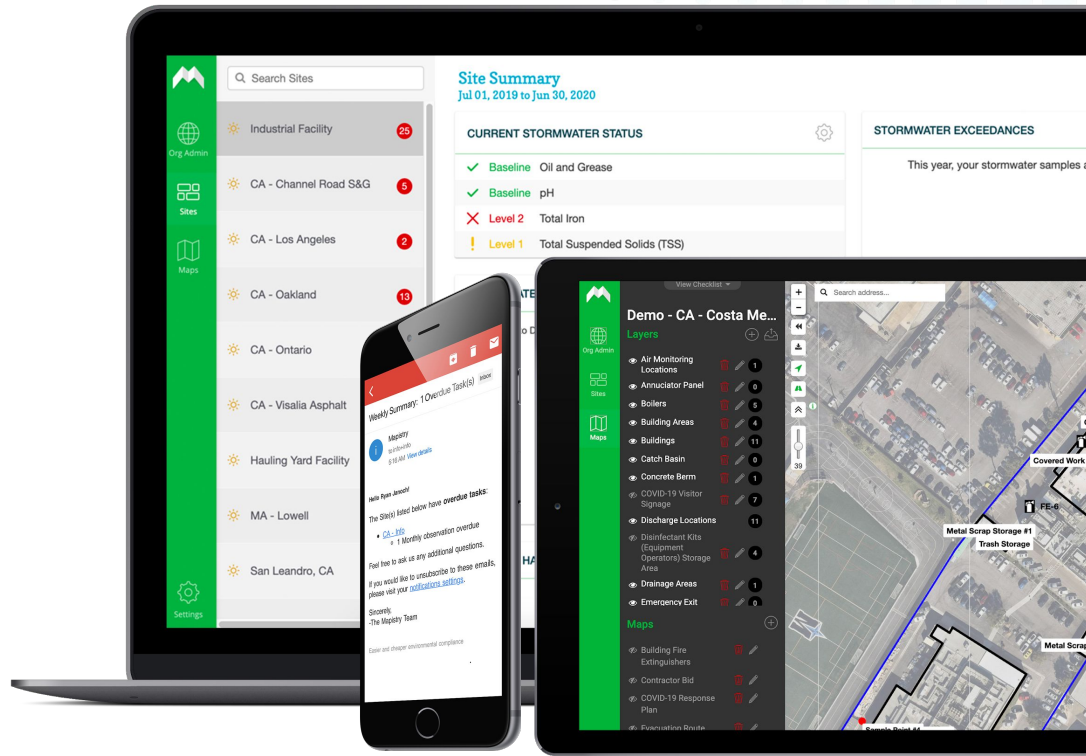
Inspection done in the field are captured in real-time





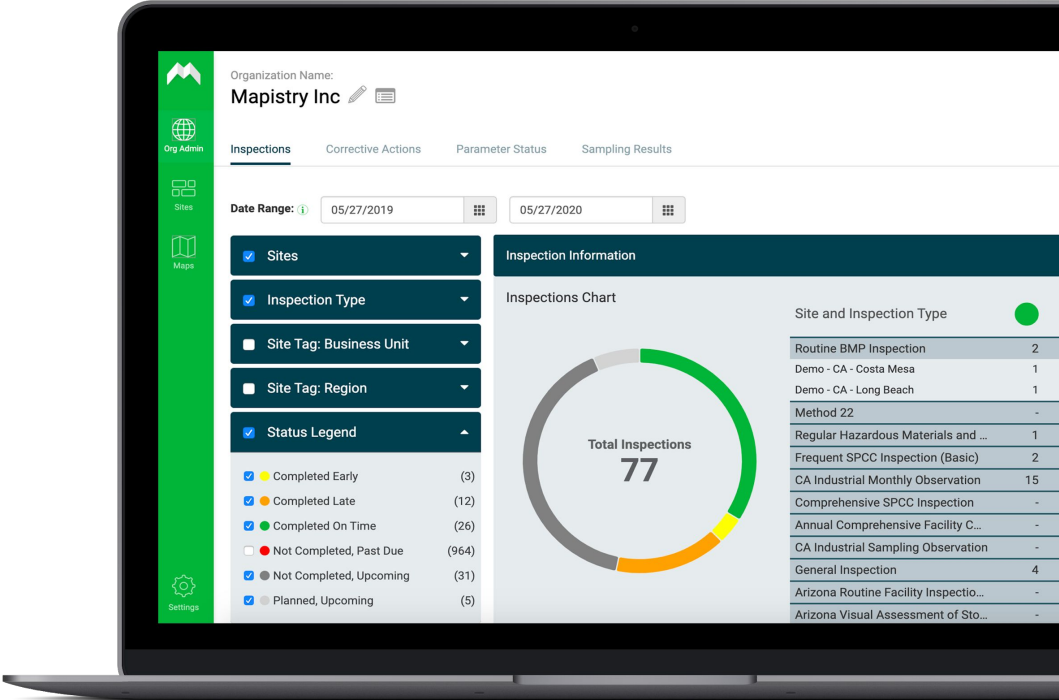
# Centralize

Teams centrally manage the quality of day-to-day compliance inspections and corrective actions



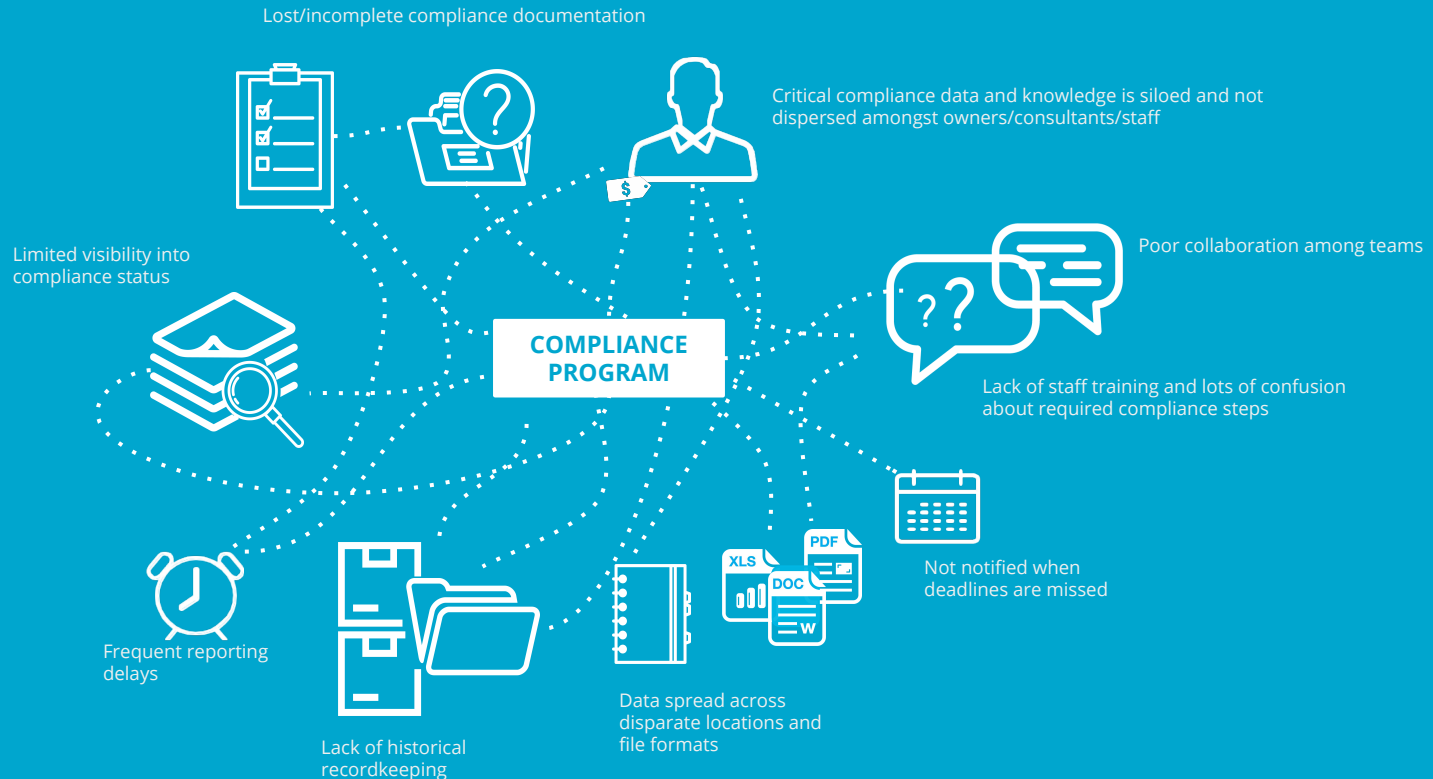
# Analyze

Leadership gets 24/7 visibility into compliance health



# What is your inspection program today?

# Compliance programs are complicated



# Where Do Inspection Programs Fail?

“I didn’t know about it”

“Where is the binder?”

“I didn’t know what to do”

“I think we have them somewhere”

“It’s not my job”

“I am not trained on that”

“Why are the inspections missing?”

“Our guys are probably pencil whipping it”

“They left and we forgot about it”

“I need to drive to the site to get those”

“We will do better next year”

“We lost the forms”



# Core Principle #1

Inspections are done on time for  
each environmental or safety  
program

# Core Principle #2

Inspections are accurately  
documented

# Core Principle #3



Inspections are kept as part of  
legally required documents

**How are you doing  
inspections today?**

# Can you be sure that...

- 1) all inspections are **done**
- 2) inspections are **accurate**
- 3) there are **records** of them

# Bonus points

- 1) do you know **where to spend your time?**
- 2) can you **easily show execs** the good & bad?

# Phases of Inspection Program Maturity




# Phase 1 - Inspection Completion

**Piping Condition** \* ?  
Is piping free of leaks, corrosion, and damage?

**Corrective Action Needed?** \* ?

**Corrective Action Description** ?

**Assign Someone to Complete the Corrective Action** ?

**Photo(s)**  
  


CA - Demo New

**Container/Equipment**  
\* Indicates required field

Please keep the following in mind as you fill out this section:  
• Is the tank/container in good condition and operating properly, free of damage, corrosion, cracks, and leaks in regard to its contents?  
• If any deficiencies are observed, please fill out the corrective action information below.


**Name/ID** \* ?

**Containment Structure** \* ?  
Is the tank container free of water, spills debris, cracks, or fire hazards? If applicable, is the valve closed?

**Tank Condition** \* ?  
Is the tank free of leaks, drips, spills, corrosion, cracks, discoloration, and damage?

**Piping Condition** \* ?  
Is piping free of leaks, corrosion, and damage?

**Corrective Action Needed?** \* ?

**Photo(s)**  
  




## Records

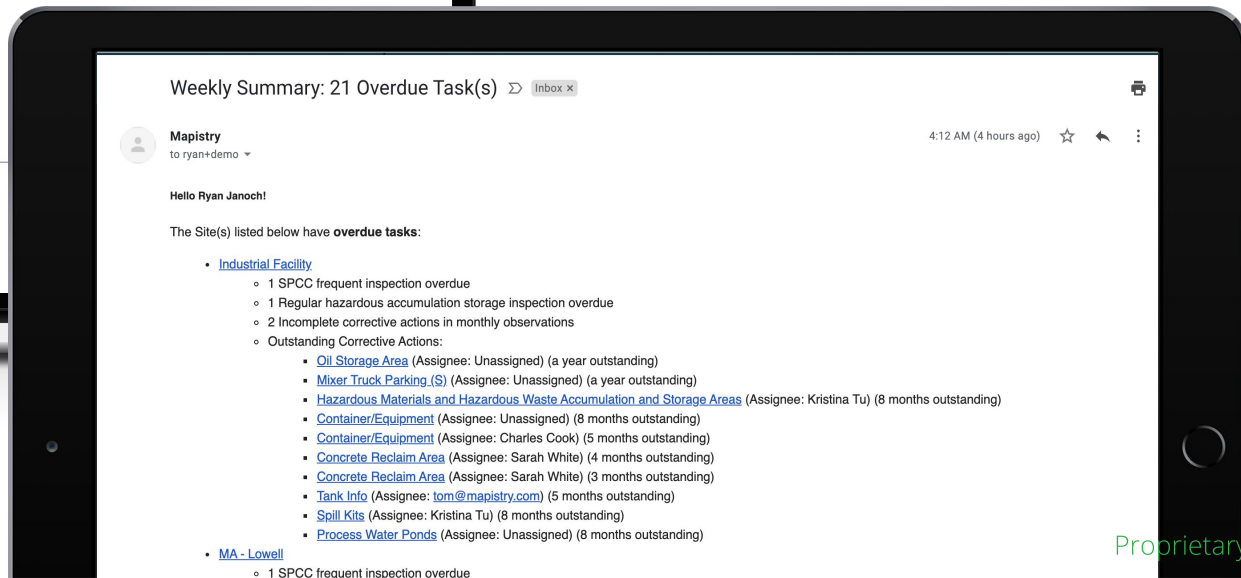
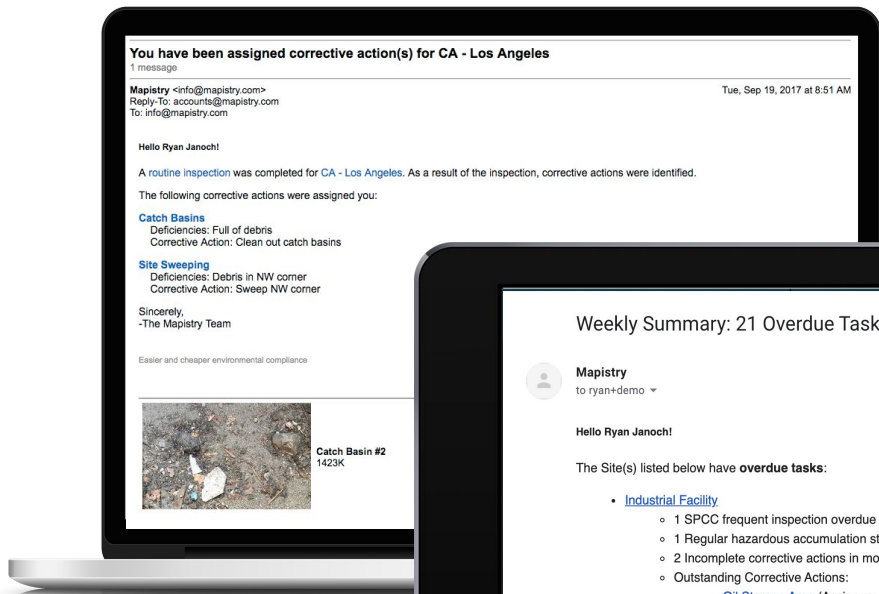
Stormwater: Routine Observations  
Stormwater: Sampling Observations  
Stormwater: Annual Evaluation  
Stormwater: SWPPP  
Stormwater: Sampling Results  
Stormwater: Exceedance Reports  
SPCC: Frequent Inspections  
SPCC: Bermed Release Form  
SPCC: Comprehensive Inspections  
SPCC: Plan  
Track Out Inspections  
**Air: Visual Emissions**  
Rain Log  
Lab Reports

## VISUAL EMISSIONS INSPECTIONS

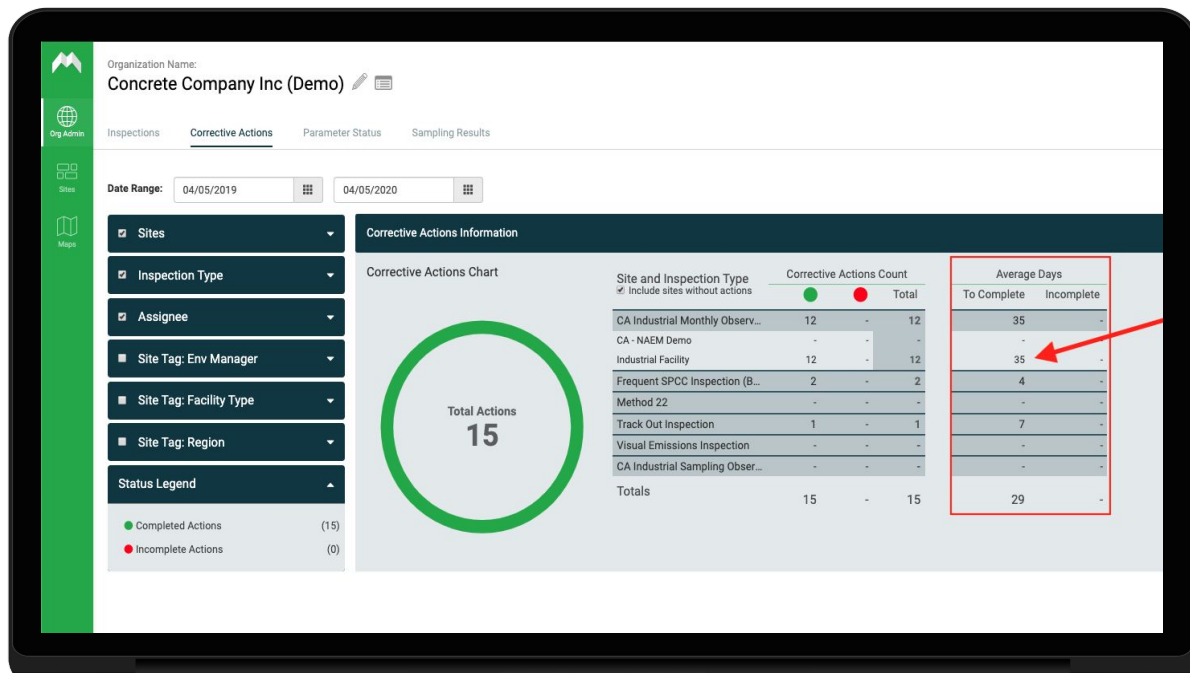
Add New Inspection

2019 May  
2019 June  
2019 July

# Phase 2 - Corrective Action Identification



# Phase 3 - Reduce Days to Complete



# What KPIs should you be tracking?

# Phase 1 - Inspection Completion

1. 100% Inspection Completion
2. 100% Inspections Done On-Time

**It's really that simple. That's the requirement**

# Phase 2 - Corrective Actions

1. Minimum of **one corrective action each inspection**, if monthly or quarterly

What industrial site have you been to that is perfectly clean/maintained?

# Phase 3 - Days to Complete

1. **Less than 2 days** to complete

**Most corrective actions should take less than 24 hours.**



# Tips

1. If you see an issue when doing the inspection and fix it on the spot, take credit.
  - a. Create a corrective action (Phase 2 Win)
  - b. Close it out right then (Phase 3 Win)

**Most companies don't take credit for actions they are doing already!**

# Summary

## Core Principles of Inspections

- Done on time
- Accurately document conditions
- Kept per legal requirements

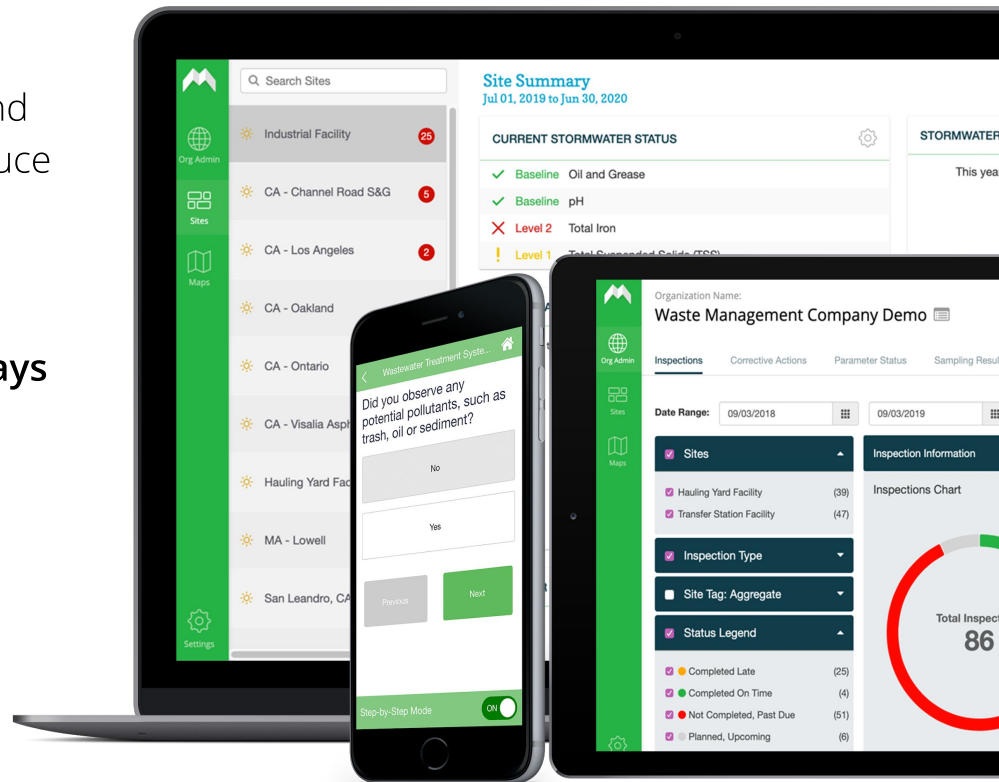
## How to Accomplish

- Make it easy for “boots on the ground” (reminders & automation)
- Pre-filled templates
- Automatically saved & centrally accessible

# How to Have a Successful Inspection Program

## KPI Summary

1. **100% Inspection Completion** - Streamline and standardize inspections for facility staff to reduce the time spent and ensure completion
2. **One Corrective Action Each Inspection**
3. **Corrective Actions Closed in Less Than 2 Days**



Those who embrace technology can  
make **decisions based on data,**  
**operate more efficiently, and avoid**  
**violations and lawsuits.**



# Stay ahead of risk

Streamline compliance workflows for facility staff and corporate teams

- Instantly monitor results across locations
- Real-time inspection, automated corrective actions, and historical reports
- Build and retain a powerful records repository
- Proactive monitoring, alerts and notifications to keep stakeholders informed



**How do you drive user  
adoption at the facilities?**

# What should managers look at in the software ?

# Thank You!



(800) 553-7420

INFO@MAPISTRY.COM





Organization Name:

Mapistry Inc  

Inspections

Corrective Actions

Parameter Status




Sampling Results

Date Range: 

11/05/2019



11/05/2020

☐ Exclude inspections whose due dates are not within this time range ☒ Sites☒ Inspection Type☐ Site Tag: Business Unit☐ Site Tag: Region☒ Status Legend☒  Completed Late (1)☒  Completed On Time (25)☒  Not Completed, Past Due (18)☒  Planned, Upcoming (7)

## Inspection Information

## Inspections Chart



## Site and Inspection Type



Total

Frequent SPCC Inspection (Basic)	19	1	10	4	34
FL - Terminal	5	-	-	1	6
MA - Terminal	-	-	10	1	11
CA - Terminal	5	-	-	1	6
NM - Terminal	9	1	-	1	11
Florida Routine Facility Inspections	2	-	-	1	3
FL - Terminal	2	-	-	1	3
Federal Routine Facility Inspections	1	-	6	1	8
MA - Terminal	-	-	3	1	4
NM - Terminal	1	-	3	-	4
CA Industrial Monthly Observation	3	-	2	1	6
Totals	25	1	18	7	51



Date Range: 11/05/2019  11/05/2020 




☒ Sites 

☒ Assignee 

☒ Ryan Janoch (3)

☐ Site Tag: Business Unit 

☐ Site Tag: Region 

Status Legend 

● Completed Actions (3)

● Incomplete Actions (0)

### Corrective Actions Information

#### Corrective Actions Chart



Site and Inspection Type	Corrective Actions Count			Average Days	
	<span style="color: green;">●</span>	<span style="color: red;">●</span>	Total	To Complete	Incomplete
Frequent SPCC Inspection (B...	3	-	3	31	-
FL - Terminal	1	-	1	21	-
NM - Terminal	2	-	2	37	-
Totals	3	-	3	31	-